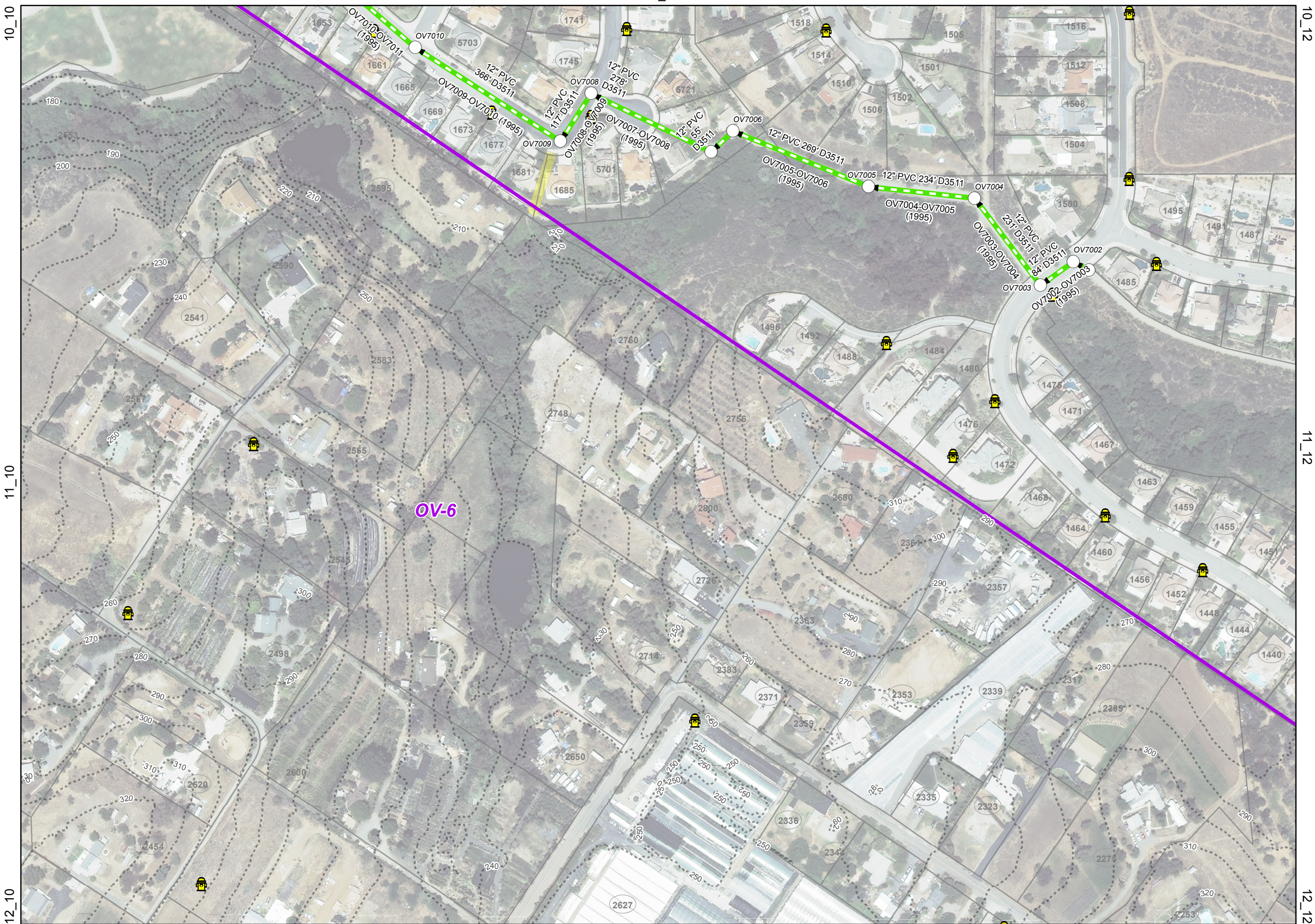


- | | |
|---------------------------|------------------------------|
| Public | Private |
| Drop Manhole | Drop Manhole |
| Standard | Standard |
| Monitor | Cleanout |
| Cleanout | Plug |
| Plug | |
| Mains | |
| Gravity Main | Force Main |
| Siphon Main | Excess Effluent |
| Trunk Line | Cured in Place Pipe |
| Drop Trunk Line | Private/Other |
| Abandoned | Laterals |
| Sewer Valves | |
| Air Vacuum | Cone |
| Ball | Gate |
| Blow Off | Plug |
| Butterfly | Tapping |
| Check | Unknown |
| Sewer Fittings | |
| Bend | Riser |
| Cap | Saddle |
| Coupling | Sleeve |
| Cross | Tap |
| Offset | Tee |
| Reducer | Weld |
| | Wye |
| Sewer Structures | |
| Grease Interceptor | Pump |
| Grease Trap | Pump Station |
| Junction Box | Sand and Oil Separator |
| Odor Control Station | Sluice Gate |
| Pigging Station | Treatment Plant |
| | Valve Box |
| Sewer Permits | Fire Hydrant |
| Sewer Meters | Access Gates |
| Sewer Easements | Flow Agreement |
| Sewer Basins | Flow & Maintenance Agreement |
| Buena Sanitation District | 10' Contours |
| City Limits | Parcels |



10_10
11_10
12_10

10_12
11_12
12_12

10_11

12_11

2012 Orthophoto

Disclaimer: This product is for informational purposes and may not have been prepared for, or be suitable for legal, engineering, or surveying purposes. Users of this information should review or consult the primary data and information sources to ascertain the usability of the information.
Last Revised: 4/4/2014